

The Glacial Lakes State Trail connects to Sibley State Park via 3 miles of paved shoulder along County Road 148. The trail also connects with many miles of groomed snowmobile trails in the Kandiyohi County Grant-in-Aid trail system.

PARKING AVAILABLE:

** Do not leave valuables in your vehicle.*

- WILLMAR: take U.S. Hwy. 12 east to County Road 9. Turn north (left) go 2 miles to parking lot on west (left) at the Civic Center.
- SPICER: at the junction of State Hwy. 23 and County Road 10. Parking lot west off 23.
- NEW LONDON: from State Hwy. 23. Follow State Highway 9 north to public water access parking lot on east (right.)

Share the Trail with Others:

- Stay on designated trail.
- Keep right so others can pass.
- Keep all pets on leash/Dispose of pet waste.
- Obey traffic signs and rules.
- Pack out all garbage and litter.
- Respect adjoining landowners rights and privacy.
- Warn other trail users when passing by giving an audible signal. Some horses may be spooked by quiet bikers or in-line skaters. Let them know you are passing.
- Overnight camping and campfires are permitted only on designated campsites. Do not leave campfires unattended.
- Enjoy the beauty of wild plants & animals, but leave them undisturbed for all to enjoy.
- Trail users are legally responsible for obeying the rules and regulations provided in *Minnesota Rules*, 6100.3000 through 6100.4300.

For additional copies of this map or other state trail maps, contact the DNR Information Center.

DNR Information Center

500 Lafayette Road
 Saint Paul, MN 55155-4040
 (651) 296-6157 (metro area & outside MN)
 1-888-MINNDNR (MN toll free)
 (646-6367)

TDD

(651) 296-5484 (metro area)
 1-800-657-3929 (MN toll free)

Minnesota Department of Tourism

100 Metro Square
 121 7th Place East
 Saint Paul, MN 55101-2112
 (651) 296-5029 (metro area)
 1-888-TOURISM (MN toll free)

**Minnesota Bikeway Maps
 Minnesota Department of Transportation**

395 John Ireland Boulevard
 Room 110
 Saint Paul, MN 55155
 (651) 296-2216
 MnDOT produces two maps (east and west MN) that grade the quality of road shoulders suitable for biking. There is a charge for these maps. Maps not available for the Metro area.

Kandiyohi County Tourist Information Center

2104 Highway 12 East
 Willmar, MN 56201
 1-800-845-TRIP (8747)

Printed on recycled paper
 with a minimum of 30%
 post-consumer material.



This information is available in alternative format upon request.

You can also check out our website at:

www.dnr.state.mn.us/state_trails/index.html

"Equal opportunity to participate in and benefit from programs of the Minnesota Department of Natural Resources is available to all individuals regardless of race, color, creed or religion, national origin, sex, marital status, status with regard to public assistance, sexual orientation, age or disability. Discrimination inquiries should be sent to the Minnesota Department of Natural Resources, 500 Lafayette Road, St. Paul, MN 55155-4031; or the Equal Opportunity Office, Department of the Interior, Washington, D.C., 20240."



Glacial Lakes

*Kandiyohi &
 Stearns Counties*



The Glacial Lakes State Trail is located on a former Burlington Northern Railroad grade, and is generally level and wheelchair accessible. The trail is paved with asphalt for 13.75 miles between Willmar, Spicer, and New London. This segment has a parallel grass treadway for horseback riding. From north of New London to Hawick is a 4.25 mile long trail surfaced with crushed granite for hiking, biking, and horseback riding.

The remaining 22 miles, between Hawick to just past Richmond, is undeveloped and has the original railroad stones as a surface. Some railroad bridges are closed.

The gently rolling topography of Central Minnesota was created by glaciers retreating 10,000 years ago. The trail cuts across the border between Minnesota's western tallgrass prairie and eastern deciduous forest. Though much of the area has been cultivated, remnants of virgin prairie, wetlands, and scattered woodlots can still be found along the railroad right-of-way. Whitetail deer, numerous small mammals, birds, reptiles and butterflies can be seen along the trail.

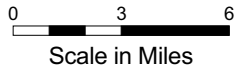
The many lakes make this area a popular tourist destination. The towns along the trail provide access points, rest stops and other services to trail users.

Primary summer use of the developed trail includes, hiking, bicycling, horseback riding and in-line skating. Within Kandiyohi County, the trail is groomed for winter snowmobile use, however studded tracks are prohibited on the asphalt surface.

MAP EXPLANATION

- Trail**
- Asphalt
 - Parallel grass treadway
 - Crushed granite
 - Future Trail (undeveloped)
 - Other Trails

- Facilities**
- Parking
 - Picnic/Rest Area
 - Campground



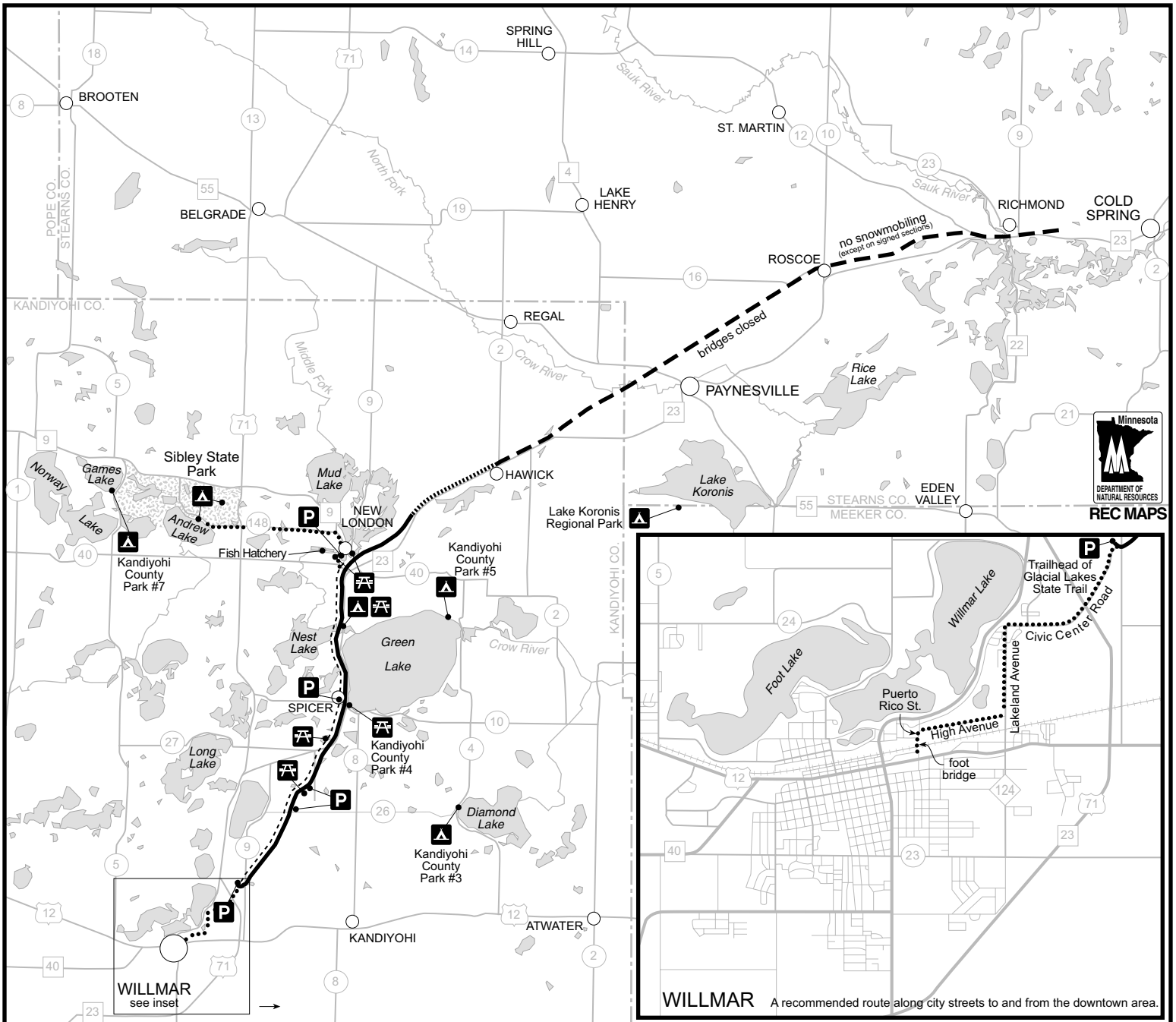
© 6/2005, Minnesota Department of Natural Resources

Glacial Lakes State Trail

Kandiyohi & Stearns Counties



Willmar	6.5	12	18	16	22.5	36
Spicer		5.5	11.5	9.5	16	30.5
New London			6	4	10.5	24
Hawick				10	4.5	18
Sibley State Park					14.5	28
Paynesville						13.5
Richmond						



REC MAPS